



OFFICIAL BULLETIN 1
(dated: November 21, 2018)



2019 IWWF World Waterski Championships

Aug 13 – 18, 2019

Putrajaya . Malaysia





1.0 GENERAL INFORMATION

1.1 Event Name

2019 IWWF World Waterski Championships

1.2 Dates

August 13-18, 2019

1.3 Host city / country

Putrajaya, MALAYSIA

1.4 Organiser

Office:

Malaysian Waterski & Wakeboard Federation (MWWF)

No. 16, Jalan Sri Tasik Barat 1E, Summerglades,
Perdana Lakeview West, Cyber 7, 63000 Cyberjaya, Selangor, Malaysia.

T/F: +603-8322 6623 Email: mwwf@waterski.com.my

W: www.waterski.com.my

Ski Site:

Waterski counter, c/o Marina Putrajaya,
No. 1, Jalan P5/5, Presint 5, 62200 Putrajaya, Malaysia.

Event Director

Mr. Hanifah Yoong

Cell: +60174901948; Email: hanifah@waterski.com.my

Honorary Secretary

Mr. Ahmad Azuddin Arshad:

Cell: +60133587319; Email: azoo@ppj.gov.my

Executive Secretary

Ms. Norzeela Sulaiman

Cell: +60123877115; Email: nozie@waterski.com.my

Accommodation & Transport Manager

Ms. Shamimi Selvarani Abdullah

Cell: +60122385045; Email: shamimi@gmail.com

Competitors Liaison Manager

Ms. Phillipa Yoong

Cell: +60122010183; Email: pcyoong@gmail.com

Technical Manager

Mr. Danny Choo Hon Nam

Cell: +60192353638; Email: danny@waterski.com.my

Supported by:





1.5 Host City - Putrajaya

Web site: <http://www.ppj.gov.my>



Supported by:





1.6 Host Country – Malaysia

Web site – Tourism Malaysia

<https://www.tourism.gov.my/>



Supported by:





1.7 Airport

Kuala Lumpur International Airport (KLIA)

Website: <http://www.klia.com.my/index.php?m=airport>

KLIA to Putrajaya (north of KLIA) by car: 25 minutes
 Putrajaya to Kuala Lumpur (north of Putrajaya) by car: 25 minutes
 KLIA to Kuala Lumpur (north of KLIA) by car: 50 minutes
 (Please note KLIA2 is another terminal for domestic and regional flights)



1.8 Rail Links

Putrajaya Sentral Train Station is located 8 minutes from the event site/Pullman Hotel and 15 minutes from the Everly Putrajaya Hotel.

Just get a free shuttle from the hotel or call Grab to this convenient station where you can arrive at KL Sentral Station in Kuala Lumpur and further connections to the city centre and touristic/shopping districts.

Website: http://www.mrt.com.my/spp/Putrajaya_Sentral_Station.htm



1.9 Local Currency

The local currency in Malaysia is Ringgit Malaysia (RM). At most super markets, shopping complexes and restaurants, you can pay with all major credit cards.

It is advisable to carry some Ringgit Malaysia (RM) cash (recommended US\$200 worth of RM) for convenience.

You can get very reasonable rates at money changers in most shopping complexes.

Current exchange rates are:
US\$ 1.00 = RM 4.10 approx
EUR 1.00 = RM 4.80 approx

Supported by:





1.10 Competition Site
Putrajaya Water Sports Complex



(Photo credit to Marian Malaquin: showing start docks with control (judges) tower on left and Pullman Hotel on right)

VENUE

**PUTRAJAYA
WATER SPORTS COMPLEX**
Venue Layout

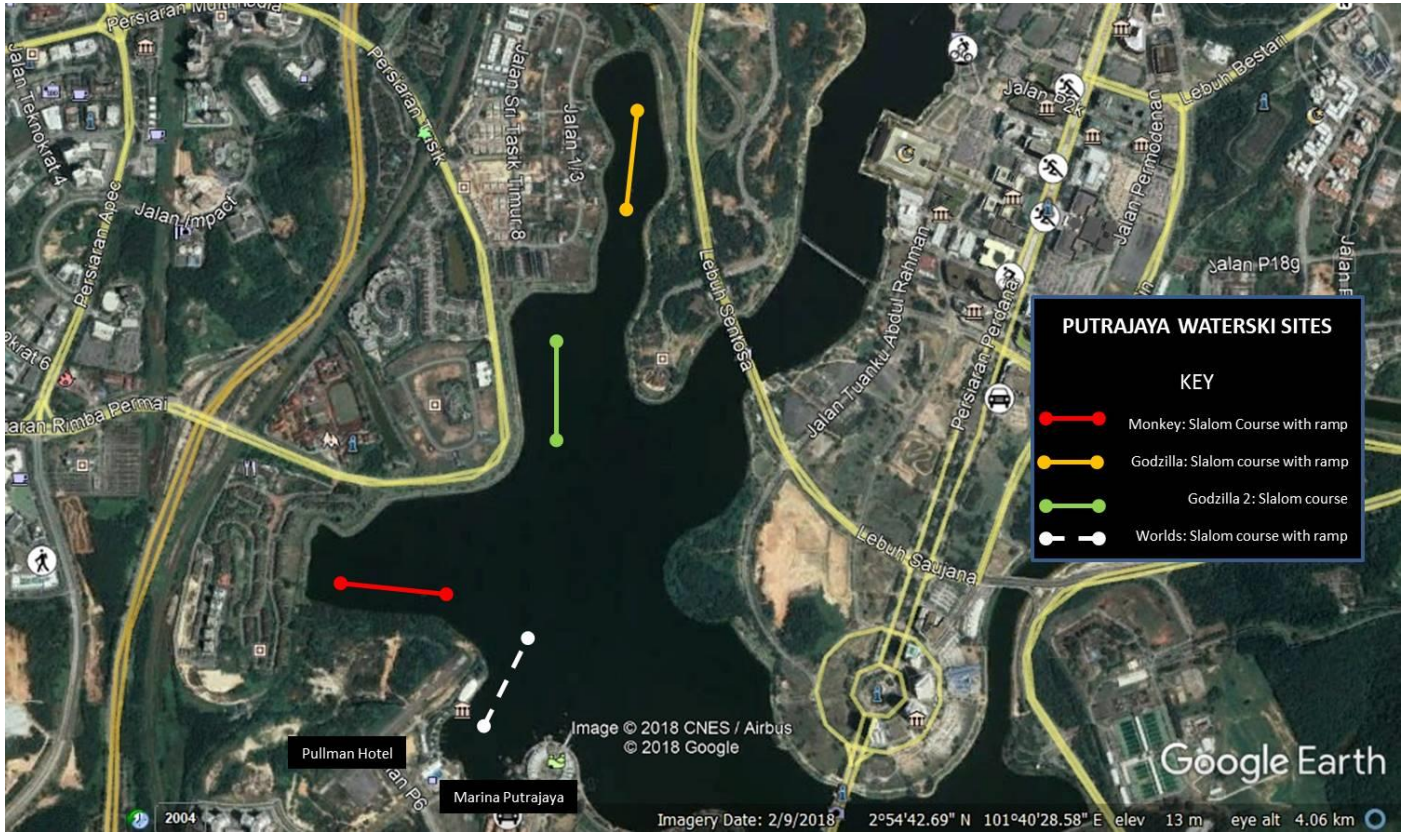


Supported by:





1.11 Practice Sites:



Supported by:





2.0 ACCOMODATIONS

The Official Hotels are “The Everly Hotel Putrajaya” and “Pullman Putrajaya Lakeside Hotel”

2.1 The Everly Hotel Putrajaya

Address:

No.1, Jalan Alamanda 2,
Precinct 1, 62000 Putrajaya,
Malaysia.

Website: <http://teg-hotels.com/b/everly-putrajaya/>



The Everly
PUTRAJAYA

Rate for single or double: RM280.00 (approx. US\$68.00) per night with breakfasts inclusive. RM10 per room per night Tourism Tax payable for foreigners is additional.

Booking must be done with the Organiser’s Accommodation Manager to get this rate. Valid credit card details must accompany bookings.

Accommodation & Transport Manager

Ms. Shamimi Selvarani Abdullah

Cell: +60122385045;

Email to: shamimi@gmail.com and copied to hanifah@waterski.com.my

This is a 4-star hotel and limited rooms have been booked. It is just 6 minutes from the ski site by car/bus.

Free shuttles daily to event site (6am, 7am, 8am and 9am) and back to hotel from event site (3pm, 4pm, 5pm and 6pm) will be free of charge for competitors and accredited officials.



Supported by:





2.2 Pullman Putrajaya Lakeside Hotel

Address:

No.2, Jalan P5/5, Presint 5

62200 Putrajaya, Wilayah Persekutuan, Malaysia

Website: <http://www.pullmanputrajaya.com/>



Rate for single or double: RM550.00 (approx. US\$134.00) per night with breakfasts inclusive. RM10 per room per night Tourism Tax payable for foreigners is additional.

Booking must be done with the Organiser’s Accommodation Manager to get this rate. Valid credit card details must accompany bookings.

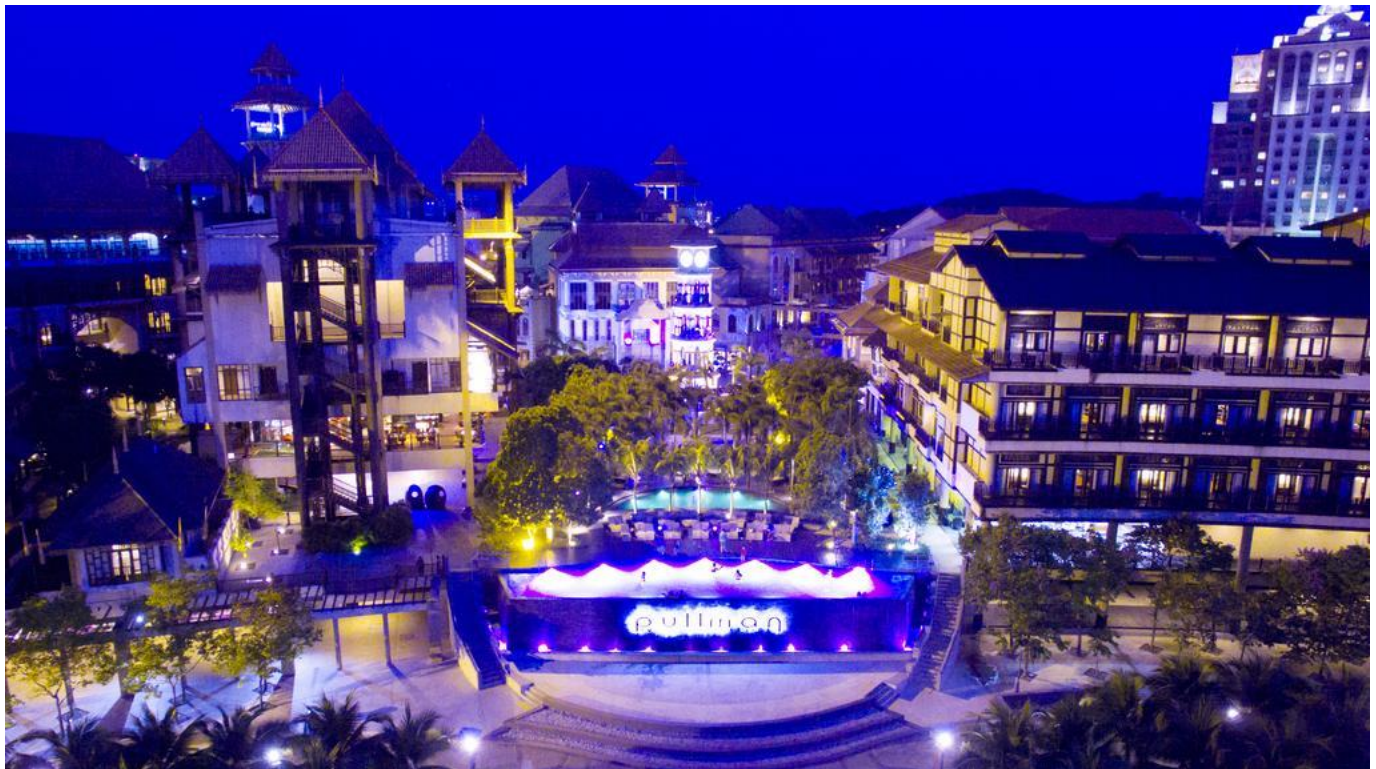
Accommodation & Transport Manager

Ms. Shamimi Selvarani Abdullah

Cell: +60122385045;

Email to: shamimi@gmail.com and copied to hanifah@waterski.com.my

This is a 5-star hotel and limited rooms have been booked. It is just beside the event site and a 200m walk to the site.



Supported by:





3.0 TRANSPORTATION FROM AIRPORT TO OFFICIAL HOTEL AND RETURN TRIP

Fully air-conditioned transport is available to transfer teams and officials to the official hotels (The Everly Putrajaya & Pullman Putrajaya) only and from hotels to airport.

Contracted Official Transporter:
K.E. Travel & Tours Sdn. Bhd.
PT 10850-A, Jalan BBN 6/1B,
Desa Cempaka, Bandar Baru Nilai,
71800 Nilai, Negeri Sembilan D.K
Malaysia.

Charges for one-way trip are:
For 8 to 25 pax: RM50 (approx. US\$12) per person
For 3 to 7 pax: RM80 (approx. US\$19) per person
For 2 pax: RM120 (approx. US\$30) per person
For 1 pax: RM240 (approx. US\$60) per person

Booking for transport for airport transfers must be booked with the Accommodation & Transport Manager below.

Transportation airport-hotel-airport and official hotel-venue-official hotel are offered free of charge to all Technical Officials, IWWF Executive Board Members and IWWF World Waterski Council members. But such free transport for airport-hotel-airport must still be booked with the Accommodation & Transport Manager below.

Accommodation & Transport Manager
Ms. Shamimi Selvarani Abdullah
Cell: +60122385045; Email: shamimi@gmail.com

Supported by:



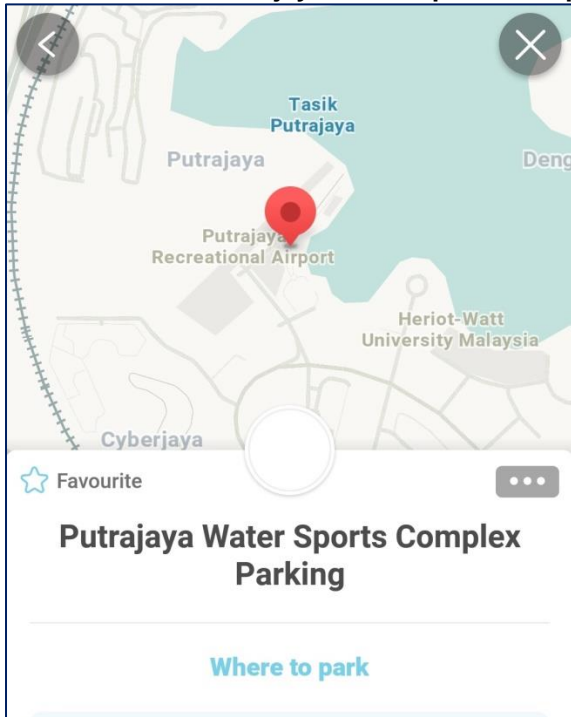


4.0 DIRECTIONS TO OFFICIAL HOTELS, SKI SITE and KLIA

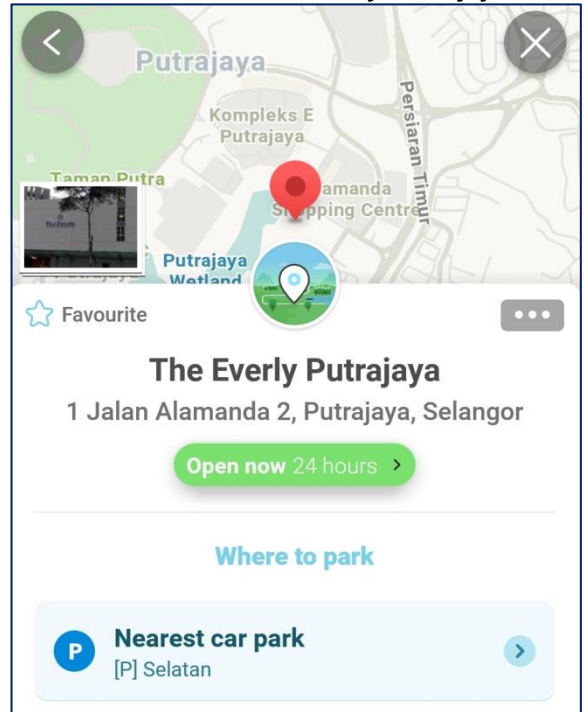
The easiest way to move around if you have a hired car is by WAZE.

Here are what you need to search for when opening the WAZE app.

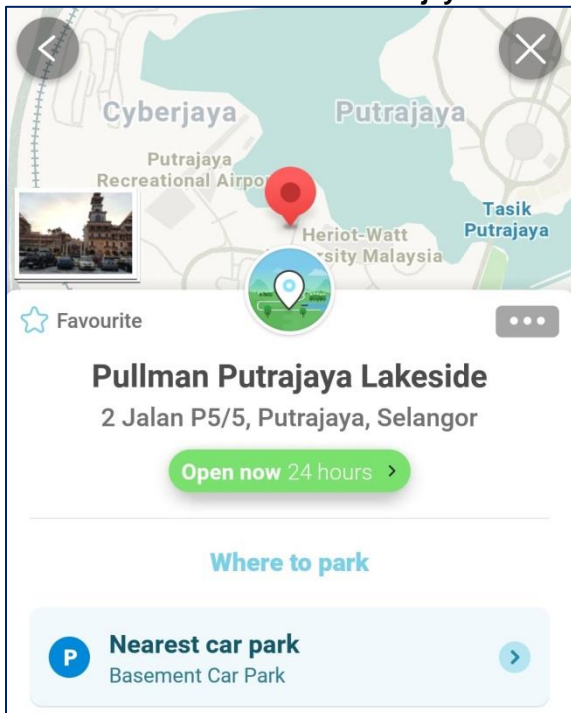
4.1 Event Site – Putrajaya Water Sports Complex



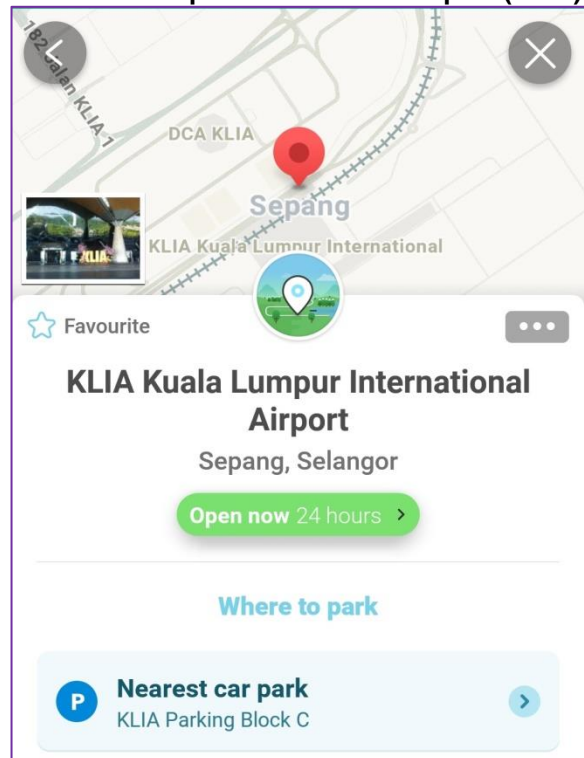
4.2 Official Hotel – The Everly Putrajaya



4.3 Official Hotel – Pullman Putrajaya



4.4 Kuala Lumpur International Airport (KLIA)



Supported by:





4.6 Direction to School Operator's Office & Counter – The Marina Putrajaya

Our MWWF Waterski School is operated by WWWC and the counter is located at the Marina Putrajaya next door to the Pullman Putrajaya. This is where all organising personnel & staff will be based before August 08, 2019.

Please search WAZE for “Marina Putrajaya” or whatsapp Hanifah Yoong at +60174901948 to send you the location.

5.0 EVENT SKI SITE FACILITIES & SERVICES

5.1 Catering for all IWWF Officials

Lunch at ski site will be provided free of charge from when they arrive for duties to Aug 18.

Breakfasts & dinners are at the hotel. For IWWF Executive Board members & IWWF World Waterski Council members meetings lunch will be at hotel where meetings are held.

5.2 Catering for Athletes & Team Captain

Lunch at ski site will be provided free of charge from August 13 to Aug 18.

5.3 Catering for Others

Lunch vouchers can be purchased from below by email pre-order in advance up till July 31, 2019 at RM40 (approx. US\$10.00) per head per day.

Lunch vouchers can be purchased from below by email order from Aug 01, 2019 till Aug 10, 2019 at RM50 (approx. US\$12.00) per head per day.

5.4 Ski Equipment Storage

Containers will be supplied at ski site near the start docks.

5.5 Tents with fans, tables & chairs

Will be supplied for accredited competitors and officials. Supporters and other team members are to be at the grandstands.

5.6. Exclusive Tents with fans, tables & chairs

Special arrangements can be made with the Event Director for exclusive tents (20' x 20' or 10' x 10') for teams fully supplied with fans, tables, chairs, water and ice daily. Please email Hanifah Yoong at hanifah@waterski.com.my

5.7 Medical Services

Two (2) ambulances with resuscitation teams and a doctor will be on duty from Aug 13 to Aug 18, 2019.

6.0 ENTRIES REQUIREMENTS

Intention to Enter:

The organizing committee kindly ask you to submit the Intent to enter List at www.iwsftournament.com/WorldAdmin and nozie@waterski.com.my and at as well within **June 13, 2019 without penalty**. For late submission of the Intention to Enter form a penalty of US\$200.00 will be applied in accordance with IWWF Rule 2.05.

Entry form: In accordance with IWWF Rule 2.05, each federation must submit a completed definitive entry form no later than **July 13, 2019**. For late submission of the Entry Forms a penalty of US\$10.00 will be applied per day and per person, in accordance with IWWF Rule 2.05.

Final entries must be submitted through the online system at www.iwsftournament.com/WorldAdmin and also email to nozie@waterski.com.my .

ATTENTION Intentions to enter and entries MUST be submitted exclusivity through the online admin system www.iwsftournament.com/WorldAdmin and nozie@waterski.com.my using the password which was provided to your federation for this purpose. If you forgot your password, please contact IWWF administration for assistance





7.0 ENTRY FEES & PAYMENT

7.1 Entry fee is US\$350.00 per skier. The Entry Fee must be paid, by bank transfer no later than **July 13, 2019** before 12:00 hours.

7.2 An email with a copy of the bank transfer receipt has to be sent to: nozie@waterski.com.my and copied to hanifah@waterski.com.my.

7.3 Late Transfer/Payment: If transfer is made at the last moment, your team might be asked to pay in cash again if the money is not on the account of the organizer before the deadline.

7.4 MWWF Bank details:

Without entry fee paid, the skier or team is not allowed to start the competition.

Beneficiary: Malaysian Waterski & Wakeboard Federation (MWWF)

Bank name: CIMB Bank (Putrajaya Branch)

Account no.: 8008 290 901

Swift code: CIBBMYKL

Bank address: 2M11-A, Kompleks Kementerian Kewangan, No.5, Persiaran Perdana Precint 2, 62592 Putrajaya, Selangor, Malaysia.

8.0. VISA REQUIREMENTS

Most countries around the world do not need visa to enter Malaysia on a social visit. Please check with the list below regarding your country's requirements. In addition if in doubt please check with the nearest Malaysian embassy or consul office.

http://www.kln.gov.my/c/document_library/get_file?p_l_id=225808&folderId=231025&name=DLFE-1922.pdf

9.0. ACCREDITATION

IMPORTANT: To receive credentials a JPEG picture is required (please send these photos to nozie@waterski.com.my) for anyone wanting to access to the competition zone (skiers, team captain or coach & all IWWF accredited event judges & event officials).

10.0. PRACTICE

10.1 Unofficial Practice at Official Site

It will be possible to train at the official site with official boat from July 20 to August 09, 2019 at **US\$360 per hour or US\$90 per 15 minutes** from dock before getting on the boat and return to the dock which means approx. 13 minutes of actual training time under tow by the boat.

Bookings will be confirmed on first come first serve basis. Only upon receipt of payment after we confirm your booking will such booking be finally confirmed. If no payment is received 7 days after we confirm availability we reserve our right to release and sell the time to another team. Bookings shall open on the 14th day of the date of this Bulletin 1.

No lunch will be provided during Unofficial Practice and Familiarisation.

10.2 Unofficial Practice at "Monkey" & "Godzilla" (with slalom course & jump ramp)

It will be possible to train at the above sites (see layout map for locations in item 1.11 above) with the official boat from May 01 to July 19, 2019 at **US\$300 per hour or US\$75 per 15 minutes** from dock before getting on the boat and return to the dock which means approx. 13 minutes of actual training time under tow by the boat.

Supported by:





Bookings will be confirmed on first come first serve basis. Only upon receipt of payment after we confirm your booking will such booking be finally confirmed. If no payment is received 7 days after we confirm availability we reserve our right to release and sell the time to another team. Bookings shall open on the 14th day of the date of this Bulletin 1.

No lunch will be provided during this time.

10.3 Official Practice (Familiarisation)

The official Familiarisation will be held from August 10 to August 12, 2019. Fee is US\$6.00 per minute.

Deadline for requesting time on official familiarisation is on **July 13, 2019**. After this deadline available practice times will be allocated for course maintenance purpose or at Organiser’s discretion. As far as physically possible, very skier entered in slalom & jump will be allocated 6 minutes per discipline and skier entered for tricks will be allocated 5 minutes.

Once the official practice times are allocated, official schedule will be published in the official website on **July 15, 2019** and teams will have to pay before **July 20, 2019** in order to confirm their slots.

The Organizer may offer additional training during any unallocated times.

No lunch will be provided during this time.

10.4 Payment for all Practices above:

Beneficiary: Waterski & Wakeboard World Cup Sdn. Bhd. (WWWC)

Bank name: CIMB Bank (Putrajaya Branch)

Account no.: 8600 302 584

Swift code: CIBBMYKL

Bank address: 2M11-A, Kompleks Kementerian Kewangan, No.5, Persiaran Perdana Precint 2, 62592 Putrajaya, Selangor, Malaysia.

Please write in the message the “**country name**” and “**training fee World 2019**” and the amounts for official and non-official training for the payment receipt.

10.5 Bookings for all Practices

Shall be in emails and made to hanifah@waterski.com.my and copied to danny@waterski.com.my.

11.0 PROVISIONAL SCHEDULE

July 20, 2019 to August 09, 2019	Unofficial Practice at Official Site
August 10 to August 12, 2019	Official Practice (Familiarisation)
August 13 to August 18, 2019	2019 IWWF World Waterski Championships Competition

12.0 BANK CHARGES FOR PAYMENT

All bank charges incurred by bank transfers are the responsibility of the remitting Federations or persons who paid. Such deductions by banks will be claimed back from payees.

13.0 DOPING CONTROL

13.1 In accordance with the IWWF Anti-Doping Rules, Doping controls will be conducted during the competition. By entering this competition, all athletes agree to be subject to doping control.

13.2 Information about the IWWF Anti-Doping program, the current IWWF AD Rules and links to the list of banned substances can be accessed on iwwfed.com in the "Athletes" drop down menu on the homepage, under the Anti-Doping tab. The direct link is: <http://iwwfed.com/athletes/anti-doping/>

Supported by:





14.0 BULLETIN 2

Bulletin 2 for the 2019 IWWF World Waterski Championships will contain further information.

15.0 SOCIAL EVENTS & MEETINGS PROGRAMME

DATE	Morning	Afternoon / Evening
Monday 12 August	IWWF Bureau Meeting	IWWF Bureau Meeting
Tuesday 13 August	IWWF Bureau Meeting	IWWF Executive Board Meeting
Wednesday 14 August	IWWF Executive Board Meeting	IWWF Executive Board Meeting
Thursday 15 August		19.00h IWWF Congress (time TBC)
Friday 16 August		18.00h IWWF International Hall of Fame Induction Ceremony (time TBC)

*Opening Ceremony to be decided and published in Bulletin 2.

**The Hall of Fame Induction Presentation is free of charge to all attendees.

***The Final Night Presentation Banquet shall be at 20.00h is free of charge to all athletes, team captain, event technical officials, and IWWF Executive Board & IWWF World Waterski Council members. Tickets cost will be notified in Bulletin 2.

16.0 USEFUL CONTACTS & ADDRESSES

16.1 Hospital Putrajaya

Hospital Putrajaya, Jalan P9, Presint 7, 62250 Putrajaya, Wilayah Persekutuan Putrajaya.
Phone: 03-8312 4200

16.2 Embassies

List of embassies and consulates in Malaysia. Large majority of them are based in Kuala Lumpur / Putrajaya:
<https://www.embassypages.com/malaysia>

16.3 Fire service: Call Emergency 999

16.4 Police: Call Emergency 999

16.5 Medical Emergency (Ambulance): Call Emergency 999

16.6 Visit of Kuala Lumpur and the surroundings, Malacca (historic city), Beach Resorts & Highland Resorts

K. E. Travel & Tours – a service counter will be set up in The Everly Putrajaya Hotel (main official hotel).
<http://www.ketravel.com.my/profile.htm>

16.7 Interpreters / Tourist Guides

K. E. Travel & Tours <http://www.ketravel.com.my/profile.htm>

16.8 Local Transport

Refer to hotel's transportation or you can easily use the phone app 'GRAB' for transportation services.

16.9 General Assistance

Secretariat counters will be set up in The Everly Putrajaya Hotel & The Putrajaya Pullman Hotel Lakeside.

Supported by:





17.0 OFFICIAL TOW BOAT

Official Tow Boat:
2019 Ski Nautique - H6 6.2L engine

Tow Boat Speed Control System:
Zero Off.



END of Bulletin 1 dated November 21, 2018

Supported by:

